

# Baby Sheep Hat

by Melissa Burt

*based on the Sheep Yoke Cardigan by Jennifer Little*

<http://lookingglassknits.blogspot.com/2007/10/sheep-yoke-baby-cardigan-pattern.html>

**Size:** Newborn (about 12" circumference)

**Gauge:** About 5.5 sts & 7 rows/inch (gauge is not critical)

**Yarn:** Knit Picks Swish DK in green, blue, black and white (less than 1 ball each)

**Note:** I dyed my own colors with the Bare version of the yarn and bought 1 ball of white for the sheep parts and pom pom.

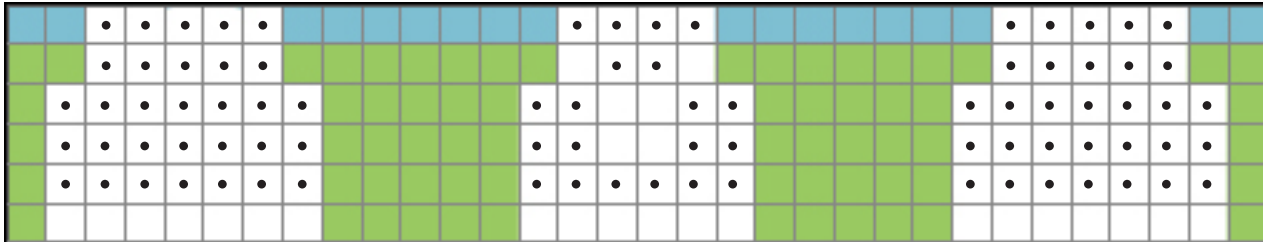


With your green yarn, cast on 64 stitches and join to work in the round.

Knit for 16 rows.

Begin working stranded colorwork chart below (repeats twice around the hat).

Purl on the white parts in order to make fluffy sheep!



Switch to blue yarn and work for about 13 rows.

Begin decreasing as follows:

Round 1: \*k6, k2tog; repeat from \* around (56 sts)

Round 2: \*k5, k2tog; repeat from \* around (48 sts)

Round 3: \*k4, k2tog; repeat from \* around (40 sts)

Round 4: \*k3, k2tog; repeat from \* around (32 sts)

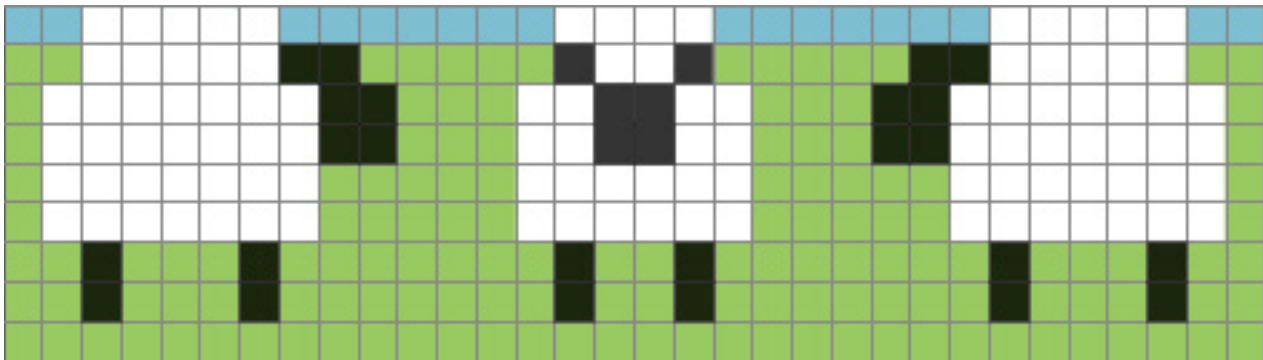
Round 5: \*k2, k2tog; repeat from \* around (24 sts)

Round 6: \*k1, k2tog; repeat from \* around (16 sts)

Round 7: \*k2tog; repeat from \* around (8 sts)

Cut yarn and strand through remaining live stitches, drawing the hole closed.

Work duplicate stitch for the following black areas:



Make a small pompom out of white yarn and attach (optional). Weave in all ends and block lightly.